

Fire Station #2 Parking Lot

for

City Of Pembroke

at

Pembroke

Bryan County, Georgia

Date: March 7, 2019

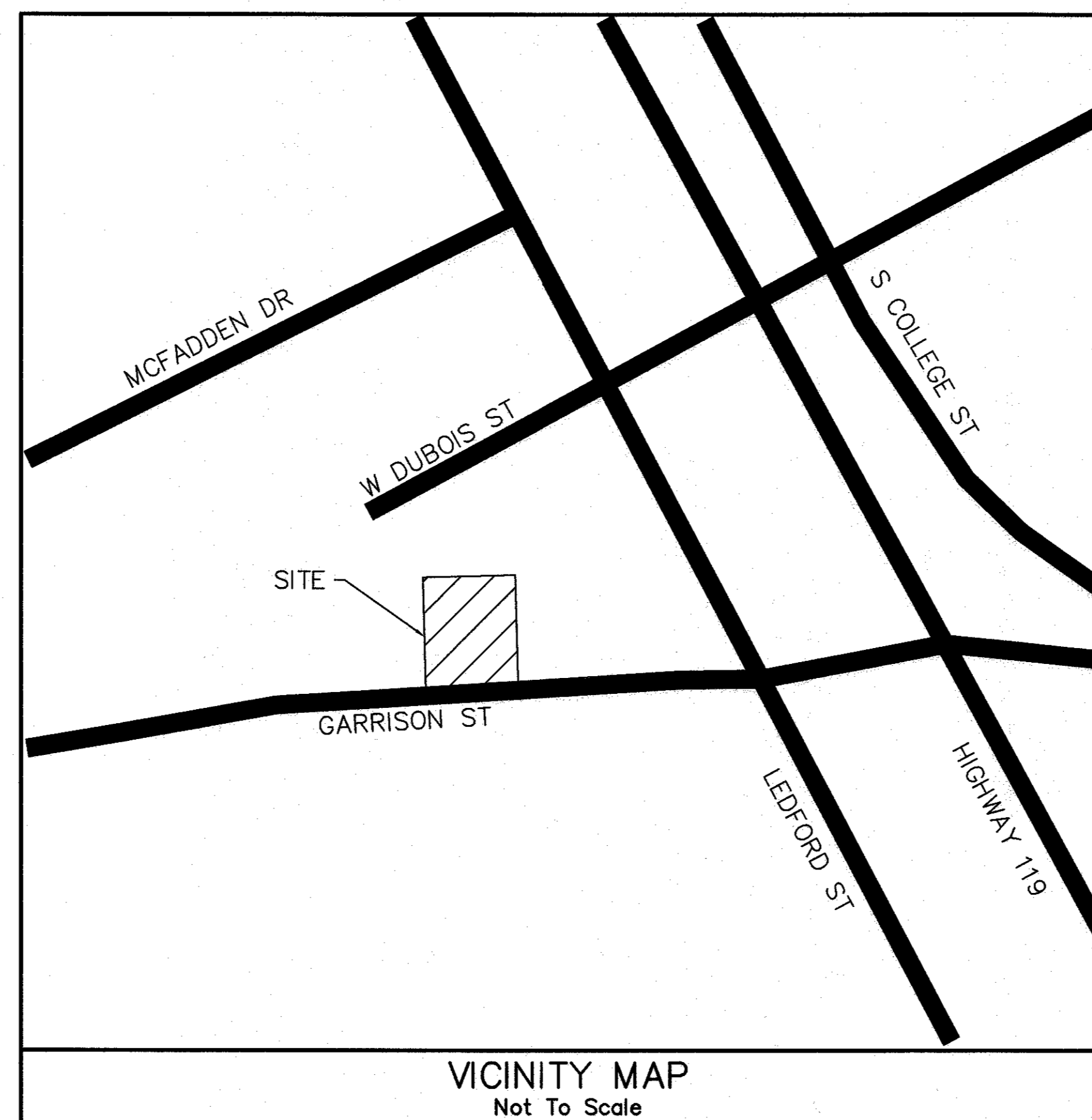
SHEET INDEX:

DESCRIPTION

1. SITE PLAN/ DEMOLITION PLAN
2. GRADING PLAN/ EROSION CONTROL PLAN

SHEET

- SHEET 1
- SHEET 2



GENERAL NOTES

1. ALL EXISTING UTILITIES SHOWN ARE LOCATED FROM BEST AVAILABLE INFORMATION. THE CONTRACTOR SHALL BE RESPONSIBLE FOR ACTUAL FIELD LOCATION AND PROTECTION OF EXISTING UTILITIES. OVERHEAD LINES ARE NOT SHOWN FOR CLARITY.
2. ALL DISTURBED AREAS TO BE REVEGETATED IMMEDIATELY AFTER CONSTRUCTION, IN ACCORDANCE WITH THE MANUAL FOR EROSION AND SEDIMENT CONTROL IN GEORGIA.
3. ALL EROSION AND SEDIMENTATION CONTROL STRUCTURES SHALL BE INSTALLED PRIOR TO OR CONCURRENT WITH START OF CONSTRUCTION.
4. THE CONTRACTOR SHALL BE RESPONSIBLE FOR THE REPLACEMENT OF ANY PROPERTY CORNERS, RIGHT OF WAY MONUMENTS, SIGNS OR OTHER STRUCTURES DISTURBED DURING CONSTRUCTION.
5. ALL TRAFFIC AND SIGNAGE CONTROL SHALL BE IN ACCORDANCE WITH THE TRAFFIC CONTROL MANUAL GUCC, CURRENT EDITION.

OWNER/AGENT

CONTACT: ALEX FLOYD
160 N MAIN ST
PEMBROKE, GA 31321
TEL: (912) 653-4413



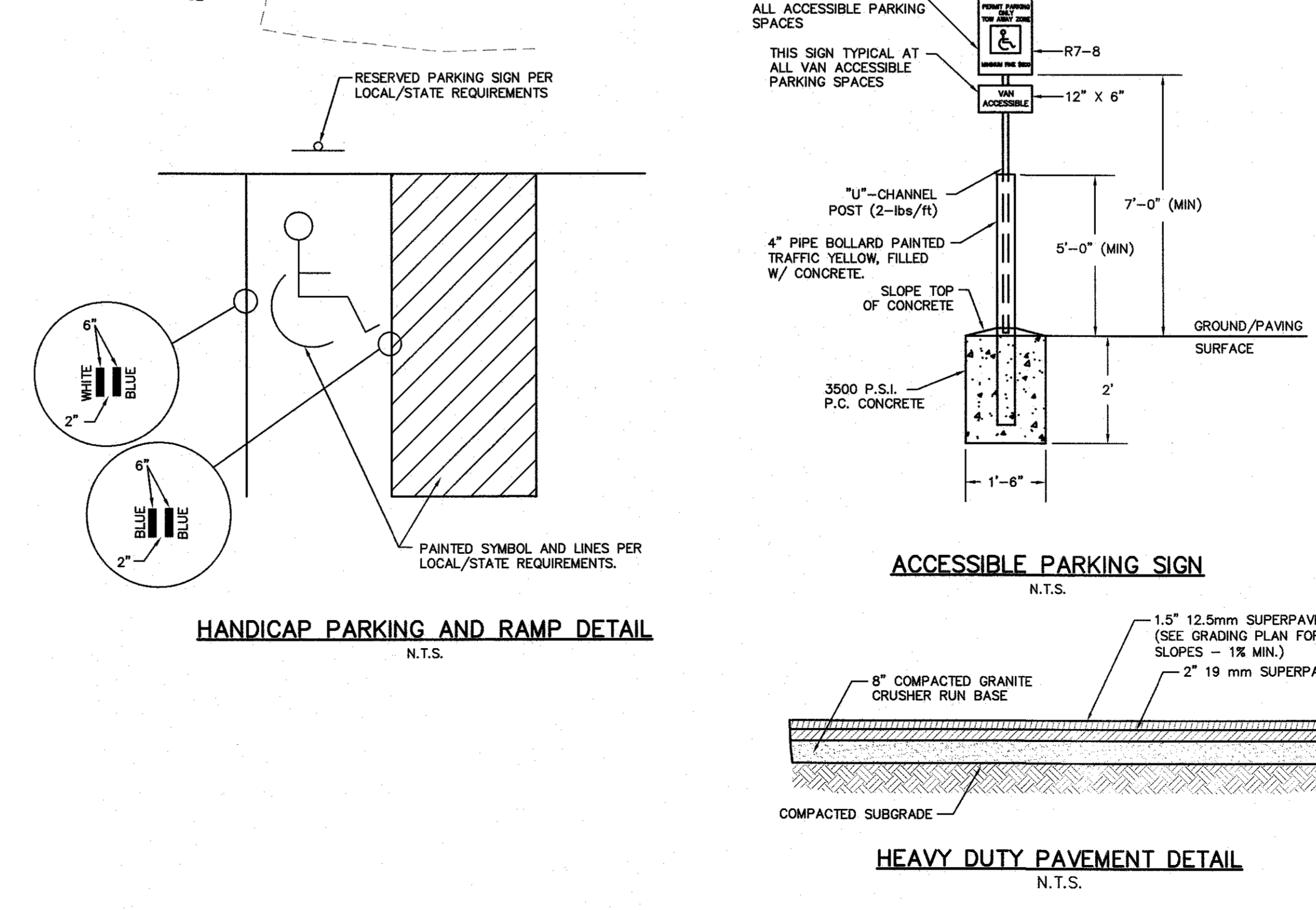
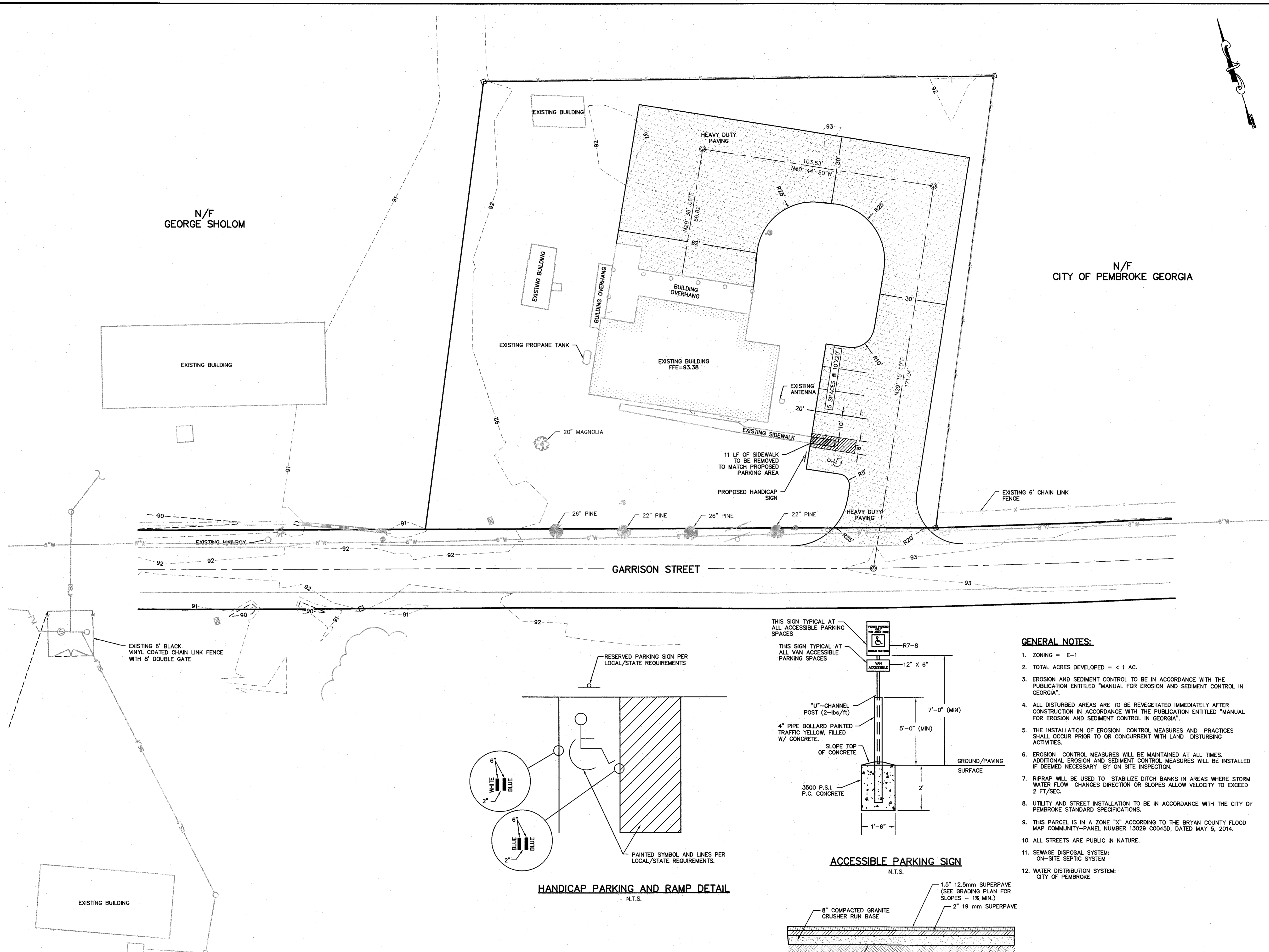
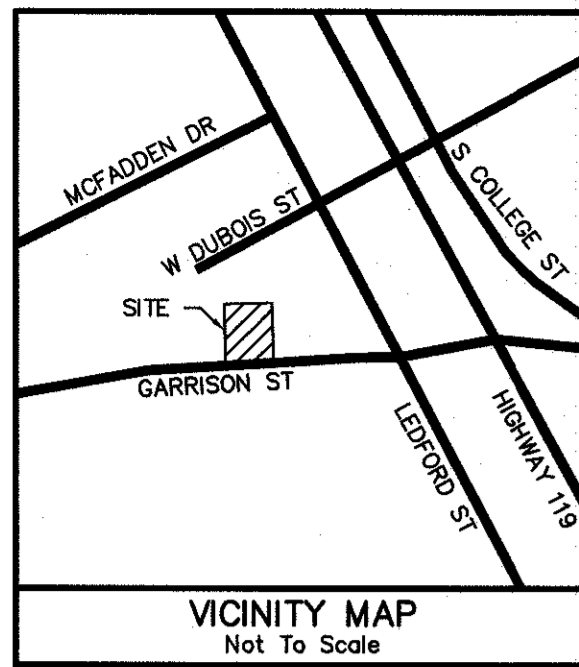
DATE: 3-22-19



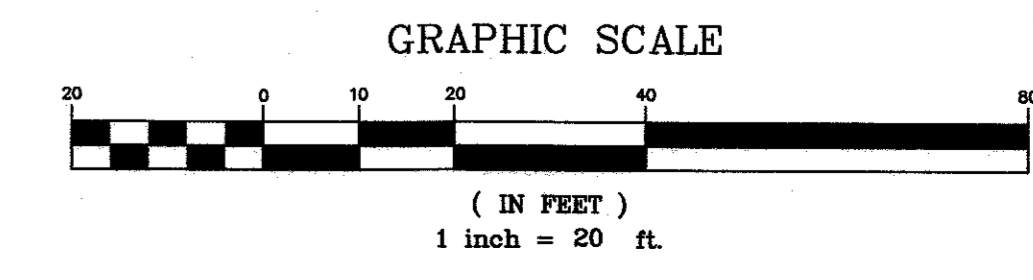
Know what's below.
Call before you dig.

JOB NO. 2019-39PRJ

REVISION NO.	DATE	DESCRIPTION



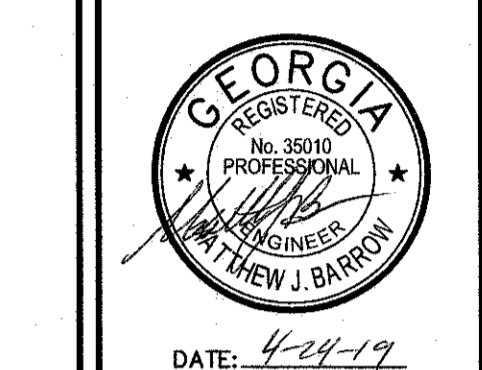
- GENERAL NOTES:**
1. ZONING = E-1
 2. TOTAL ACRES DEVELOPED = < 1 AC.
 3. EROSION AND SEDIMENT CONTROL TO BE IN ACCORDANCE WITH THE PUBLICATION ENTITLED "MANUAL FOR EROSION AND SEDIMENT CONTROL IN GEORGIA".
 4. ALL DISTURBED AREAS ARE TO BE REVEGETATED IMMEDIATELY AFTER CONSTRUCTION IN ACCORDANCE WITH THE PUBLICATION ENTITLED "MANUAL FOR EROSION AND SEDIMENT CONTROL IN GEORGIA".
 5. THE INSTALLATION OF EROSION CONTROL MEASURES AND PRACTICES SHALL OCCUR PRIOR TO OR CONCURRENT WITH LAND DISTURBING ACTIVITIES.
 6. EROSION CONTROL MEASURES WILL BE MAINTAINED AT ALL TIMES. ADDITIONAL EROSION AND SEDIMENT CONTROL MEASURES WILL BE INSTALLED IF DEEMED NECESSARY BY ON SITE INSPECTION.
 7. RIPRAP WILL BE USED TO STABILIZE DITCH BANKS IN AREAS WHERE STORM WATER FLOW CHANGES DIRECTION OR SLOPES ALLOW VELOCITY TO EXCEED 2 FT/SEC.
 8. UTILITY AND STREET INSTALLATION TO BE IN ACCORDANCE WITH THE CITY OF PEMBROKE STANDARD SPECIFICATIONS.
 9. THIS PARCEL IS IN A ZONE "X" ACCORDING TO THE BRYAN COUNTY FLOOD MAP COMMUNITY-PANEL NUMBER 13029 C0045D, DATED MAY 5, 2014.
 10. ALL STREETS ARE PUBLIC IN NATURE.
 11. SEWAGE DISPOSAL SYSTEM: ON-SITE SEPTIC SYSTEM
 12. WATER DISTRIBUTION SYSTEM: CITY OF PEMBROKE



DRAWING COMPLETED BY: ELLIOTT WILSON

REVISED:

THIS DRAWING IS AN INSTRUMENT OF SERVICE AND REMAINS THE PROPERTY OF P.C. SIMANTON & ASSOCIATES, INC. NO PART OF THIS DOCUMENT OR THE INFORMATION CONTAINED HEREIN IS TO BE REPRODUCED OR TRANSMITTED IN ANY FORM OR BY ANY MEANS, ELECTRONIC OR MECHANICAL, INCLUDING PHOTOCOPYING, RECORDING, OR BY ANY INFORMATION STORAGE AND RETRIEVAL SYSTEM. P.C. SIMANTON & ASSOCIATES, INC. ASSUMES NO RESPONSIBILITY FOR DATA GENERATED, COPIES OR REPRODUCTIONS OF THIS DRAWING OR FOR ANY DISPUTE, HARM OR LOSS OF ANY KIND, INCLUDING REVENUE, ARISING FROM ANY USE OF THIS DRAWING OR ANY ELECTRONIC MEDIA.



309 NORTH MAIN STREET
P.O. BOX 649
HINESVILLE, GA 31113
TEL: (912) 368-5212

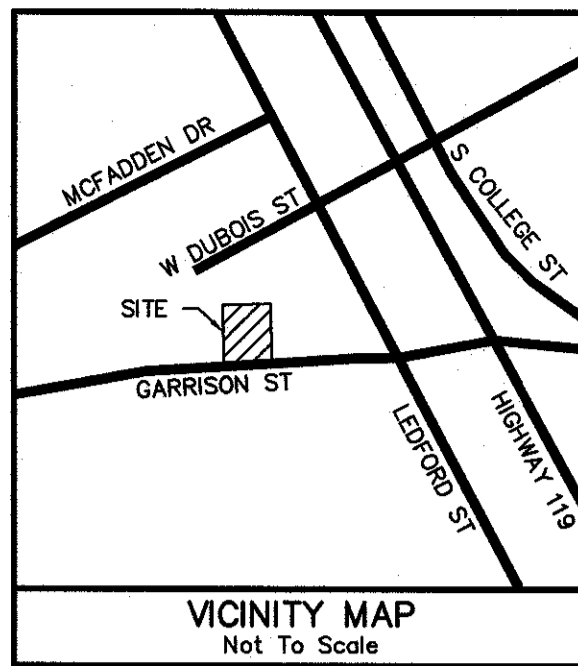
1050 PARKSIDE COMMONS
GREENSBORO, GA 30642
TEL: (706) 454-0870

P.C. Simonton & Associates, Inc.
Consulting Engineers

Fire Station #2 Parking Lot
for
City of Pembroke
Pembroke
Bryan County, Georgia

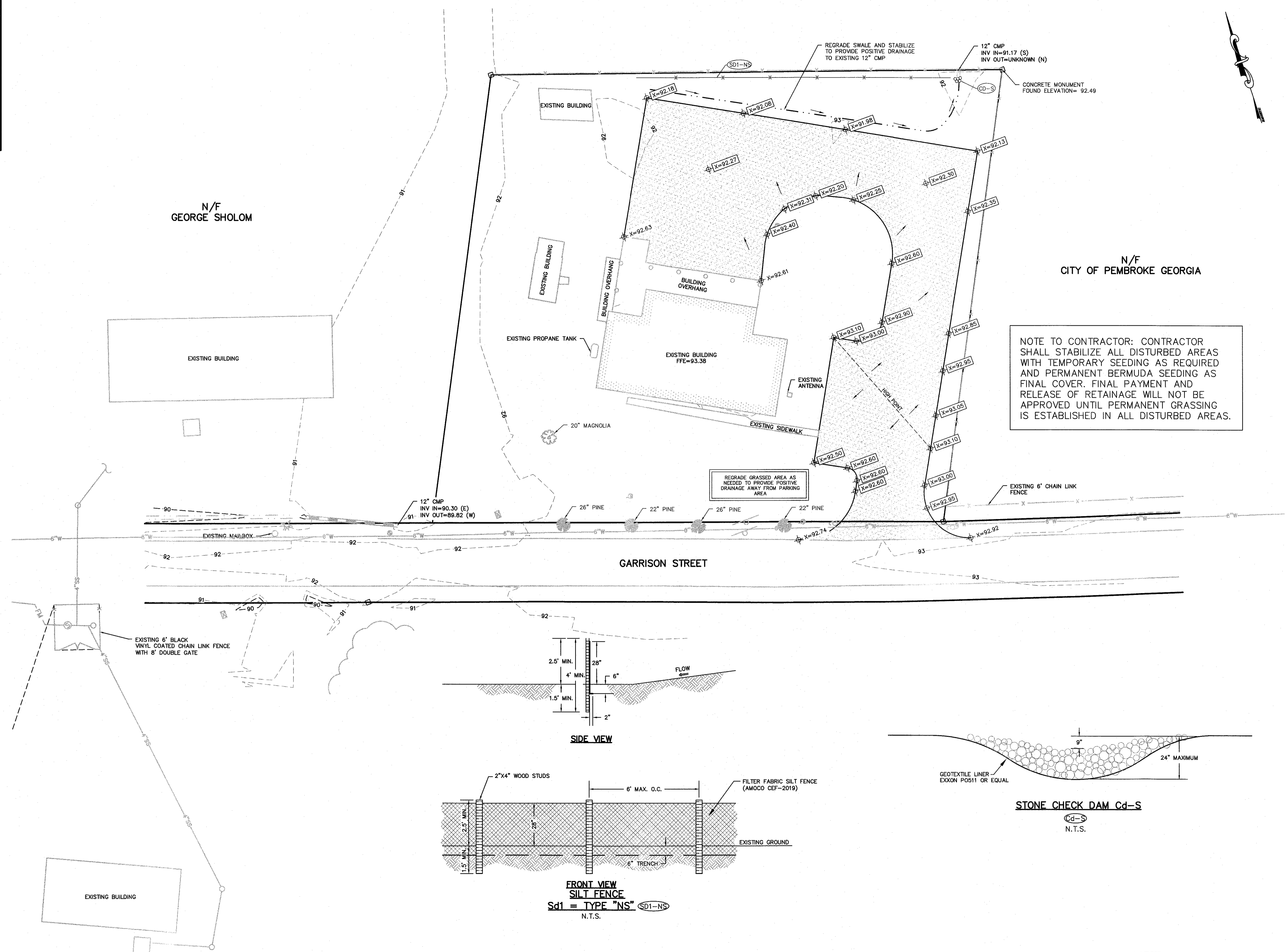
Site Plan / Demolition Plan

DATE: MARCH 7, 2019
FILE NO: 2019-39PRJ
SHEET: 1



N/F
GEORGE SHOLOM

N/F
CITY OF PEMBROKE GEORGIA

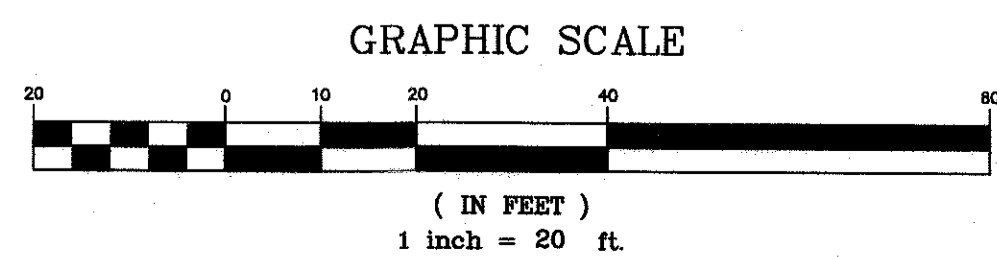


EXISTING 6" BLACK VINYL COATED CHAIN LINK FENCE WITH 8' DOUBLE GATE

SIDE VIEW

FRONT VIEW
SILT FENCE
Sd1 = TYPE "NS" SD1-NS
N.T.S.

STONE CHECK DAM Cd-S
N.T.S.



DRAWING COMPLETED BY: ELLIOTT WILSON

REVISED:

THIS DRAWING IS AN INSTRUMENT OF SERVICE AND REMAINS THE PROPERTY OF P.C. SIMANTON & ASSOCIATES, INC. NO PART OF THIS DOCUMENT OR THE INFORMATION CONTAINED HEREIN IS TO BE REPRODUCED IN ANY MANNER WITHOUT PERMISSION ON A SIGNED AND SEALED DOCUMENT BY P.C. SIMANTON & ASSOCIATES, INC. P.C. SIMANTON & ASSOCIATES, INC. ASSUMES NO RESPONSIBILITY FOR DATA GENERATED, COPIES OR REPRODUCTIONS OF THIS DRAWING OR ANY ELECTRONIC MEDIA. P.C. SIMANTON & ASSOCIATES, INC.



DATE: 4-24-19

309 NORTH MAIN STREET
P.O. BOX 649
HINESVILLE, GA 31113
TEL: (912) 368-5212

1050 PARKSIDE COMMONS
GREENSBORO, GA 30642
TEL: (706) 454-0870

P.C. Simonton & Associates, Inc.
Consulting Engineers

Fire Station #2 Parking Lot
for
City of Pembroke
Pembroke
Bryan County, Georgia

Grading Plan /
Erosion Control Plan

DATE: MARCH 7, 2019
FILE NO: 2019-39PRJ
SHEET: 2